

Model #

17F-2-50-3-40K
Hennessy HD Series Tube Light

TITAN LED
LIGHTING SOLUTIONS

Hand Crafted with Pride in The United States of America

11 Watt HD 2 Foot Linear Tube Light

High Efficiency - High Definition

Specifications - Light Output

Total Lumen Output: 1,604 lm (Frosted Lens)
Kelvin Temp.: 4000K
CRI: 84
Lighting Angle: 120°

Specifications - Electrical

Voltage Range: 120 - 277V
Max. Ambient Temp: -4° to 139°F / -20 to 59°C
Dimmable: Yes*
Efficacy INITIAL: 163.8 lm/W
Voltage: 120 V
Frequency: 60.0 Hz
Current: 0.102 A
Power: 11.1 W
Drive Current: 350 mA
Power Factor: .91
Efficacy DELIVERED: 144.5 lm/W
THD: 1.3 %
Voltage: 277 V
Frequency: 60.0 Hz
Current: 0.058 A
Power: 11.5 W
Drive Current: 350 mA
Power Factor: .71
Efficacy DELIVERED: 139.5 lm/W
THD: 5.4 %

* A Titan LED Dimmable driver must be used to achieve dimming.

Specifications - Mechanical

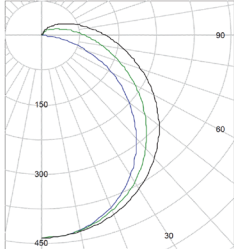
LED Count: 50 Mid Power Diodes
Industry Leader Top Tier LEDs
Dimensions: 23-1/2" L x 1-1/16" W x 3/4" H
Net Weight: 0.45 lbs / 0.2 kg
Ultra Durable, Vibration and Shock Resistant
Acrylic Frosted Lensing
No Noise, No Ultra Violet Emission
No Hazardous Mercury or Toxic Chemicals
Extruded USA 6063 Aluminum Heat Sink
Over 96 Percent Recyclable
Proprietary locking D/C Connector
Proprietary Blue ABS End Caps
Non Conductive Dura Flex ABS Bi-Pins
Replaces 40 Watt Fluorescent Tube Light

Driver SKU # (Sold Separately)

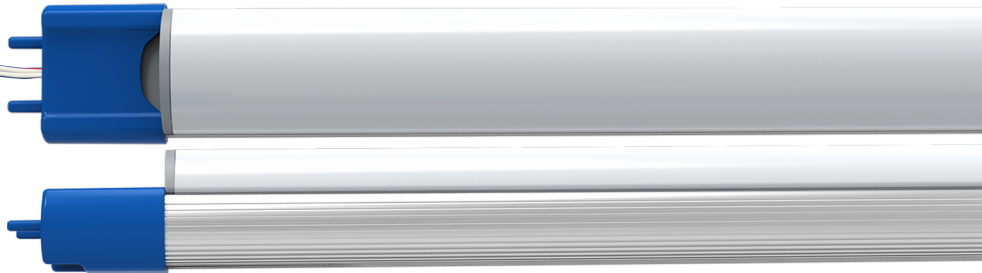
17-1CH-DR350-ND

Light Intensity Summary

Legend: C0-Black, C45-Green, C50-Blue (cd)



Gamma	C-Plane INTENSITY SUMMARY (cd)					Flux (lm)
	C0	C22.5	C45	C67.5	C90	
0.0	437	437	437	437	437	41
5.0	436	436	435	433	435	118
10.0	431	430	429	426	427	178
15.0	423	421	418	413	414	214
20.0	412	409	404	398	396	224
25.0	398	395	388	375	374	211
30.0	383	378	365	351	348	180
35.0	365	358	342	325	320	140
40.0	345	337	317	296	289	100
45.0	324	315	291	266	257	
50.0	301	291	265	235	224	
55.0	277	266	237	205	191	
60.0	253	242	211	174	157	
65.0	230	218	185	145	124	
70.0	206	194	161	118	92	
75.0	184	173	139	93	61	
80.0	163	152	119	71	34	
85.0	144	133	101	53	12	
90.0	126	116	85	39	0	



Notice: This lighting device Utilizes an External Driver!

Titan LED Tubes use a specifically engineered external LED driver to operate. Providing clean, surge protected, IC monitored constant current power is crucial to the output and longevity of the light emitting diodes.

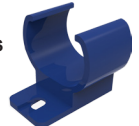


155,000
RATED HOURS

A Titan LED wirehip is (Shown Right) required for driver connection and included with each tube.



Optional Accessory: Titan LED Mounting Clips (Shown Right)



Increased Safety

All specifications and images are subject to change without notice.

- Ideal for illuminating Retail Space, Offices, Classrooms, Garages, Warehouses, Etc
- Simple and Secure Installation with industry standard Tube Based Fixtures
- Improved Bright White Color and Increased Light Levels Improve Safety and Visibility

Improved Maintainability

- Lowers Cost of Ownership - Pays Back Purchase Amount with Energy Savings
- Industry Leading Low LED Junction Temperature
- Heavy Gauge 6063 Aluminum Heat Sink
- Environmentally Friendly, No Toxic Gasses, Chemical Free, Over 95% Recyclable
- Typically Reduces Energy Consumption 50 - 70% Over Fluorescent Tubes
- Noise Free, Instant On - Off Operation, No Warm Up Time
- Custom Designed Circuit Boards populated with Top Tier Diodes
- L-90 Rated at Over 155,000 Hours DOE TM-21
- Quickly Go Green and Reduce the Earth's Carbon Footprint

Power Supply (Driver)

- A Non Dimmable driver that supplies power to this product is Not included