

Model #

17C-T5-99-6-50K-HO

Hennessy Series T5 Tube Light



TITAN LED LIGHTING SOLUTIONS

Hand Crafted with Pride in The United States of America

# 20 Watt T5 Linear Tube Light

## Specifications - Light Output

Total Lumen Output:  
3,360 lm (Clear)  
Kelvin: 5,000K  
CRI: 82  
Lighting Angle: 120°



## Specifications - Electrical

Voltage Range:	120 - 277V
Max. Ambient Temp:	-4° to 139°F / -20 to 59°C
Dimmable:	Yes*
Efficacy INITIAL:	175.8 lm/W
<b>Voltage:</b>	<b>120 V</b>
Frequency:	60.0 Hz
Current:	0.1701A
Power:	20.16 W
Drive Current:	600 mA
Power Factor:	.99
Efficacy DELIVERED:	166.7 lm/W
THD:	8.1 %
<b>Voltage:</b>	<b>277 V</b>
Frequency:	60.0 Hz
Current:	0.0812 A
Power:	20.4 W
Drive Current:	600 mA
Power Factor:	.90
Efficacy DELIVERED:	164.7 lm/W
THD:	11.6 %

\* A Titan LED Dimmable driver must be used to achieve dimming.



# 155,000 RATED HOURS

## Notice: This lighting device Utilizes an External Driver!

Titan LED Tubes use a specifically engineered external LED driver to operate. Providing clean, surge protected, IC monitored constant current power is crucial to the output and longevity of the light emitting diodes.

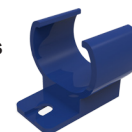
## Specifications - Mechanical

LED Count: 99 Mid Power LED's  
Top Tier Light Emitting Diodes  
Dimensions: 45-3/4" L x 1-1/16" W x 3/4" H  
Base: Titan LED Lamp Clip  
Type: C  
Net Weight: 0.9 lbs / 0.4 kg  
Ultra Durable, Vibration and Shock Resistant  
Polycarbonate Clear Lensing  
No Noise, No Ultra Violet Emission  
No Hazardous Mercury or Toxic Chemicals  
Extruded USA 6063 Aluminum Heat Sink  
Over 96 Percent Recyclable  
Proprietary locking D/C Connector  
Proprietary Blue ABS End Caps  
Replaces: 54 Watt T5 HO Fluorescent Tube Light

A Titan LED wirehip is (Shown Right) required for driver connection and included with each tube.



Optional Accessory: Titan LED Mounting Clips (Shown Right)



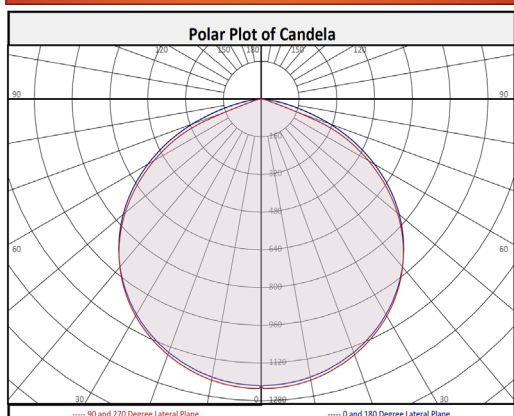
E466370



## Driver SKU \*(Not Included)

# 17-1CH-DR600-ND (1 Channel Non-Dimmable)  
# 17-2CH-DR600-DIM \*(2 Channel Dimmable)

## Polar Graph



## Increased Safety

- Ideal for illuminating Retail Space, Offices, Classrooms, Garages, Warehouses, Etc.
- Simple and Secure Installation with industry standard Tube Based Fixtures
- Improved Bright White Color and Increased Light Levels Improve Safety and Visibility

## Improved Maintainability

- Lowers Cost of Ownership - Pays Back Purchase Amount with Energy Savings
- Industry Leading Low LED Junction Temperature
- Heavy Gauge 6063 Aluminum Heat Sink
- Environmentally Friendly, No Toxic Gasses, Chemical Free, Over 95% Recyclable
- Typically Reduces Energy Consumption 50 - 70% Over Fluorescent Tubes
- Noise Free, Instant On - Off Operation, No Warm Up Time
- Built with Top Tier Diodes
- L-70 Rated at Over 155,000 Hours DOE TM-21
- Quickly Go Green and Reduce Carbon Footprint

## Power Supply (Driver)

- A Non Dimmable driver that supplies power to this product is Not included