

Model #

17F-8-198-BP-50K

Hennessy Series II Tube Light

Hand Crafted with Pride in The United States of America

38 Watt 8 Foot Linear Tube Light

Specifications - Light Output

Total Lumen Output: INITIAL: 6,994 lm DELIVERED: 6,208 lm Kelvin: 5000K CRI: 83 Lighting Angle: 130° Lens type: Frosted

Specifications - Electrical

Voltage Range: 120 - 277V Dimming: 0 - 10v Low Voltage InSitu Temp: 48.5° C Voltage 120 V Frequency 60.0 Hz Current 0.326 A Power 38.8 W Drive Current 1100 mA Power Factor .99 Efficacy 180.3 lm/W THD 10.0 % Voltage 277 V Frequency 60.0 Hz Current 0.156 A Power 39.1 W Drive Current 1100 mA Power Factor .91 Efficacy 125.7 lm/W THD 9.6 %

Specifications - Mechanical

LED Count: 198 Mid Power Top Tier LEDs Dimensions: 93-1/2" L x 1-1/16" W x 1.2" H Net Weight: 1.8 lbs / 0.8 kg Ultra Durable, Vibration and Shock Resistant Polycarbonate Frosted Lensing No Flickering, No Noise, No Ultra Violet Emission No Hazardous Mercury or Toxic Chemicals Extruded USA 6063 Aluminum Heat Sink Over 96 Percent Recyclable Proprietary locking D/C Connector Proprietary Non Conductive Blue ABS End Caps ABS Bi-Pin (Non Conductive for mounting only) Replaces 90 Watt Fluorescent Tube Light

Driver SKU

#17-1CH-DR1100-ND

#17-2CH-DR1100-DIM

Additional Product SKU #'s

17F-8-38-SP-40K

17F-8-38-SP-50K

17F-8-38-BP-40K

Light Spread Information

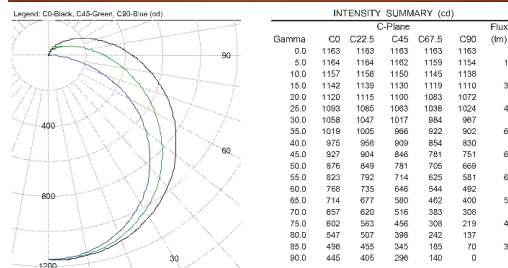
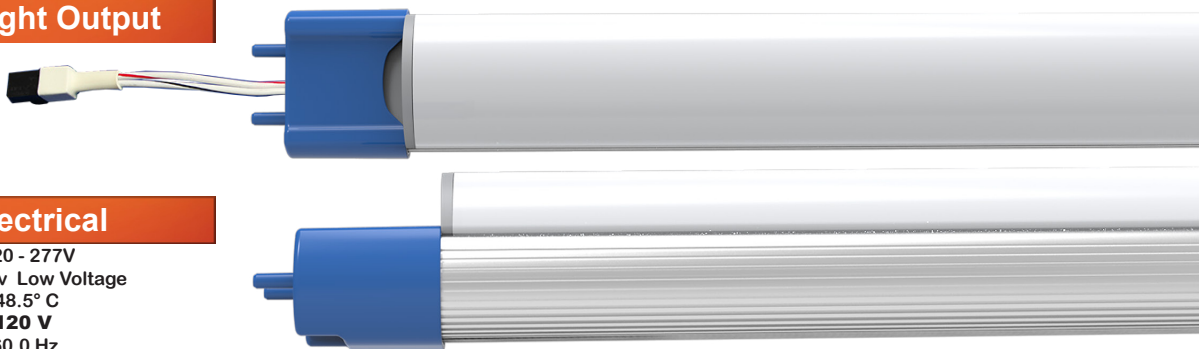


Table with 5 columns: C-Plane, C90, C45, C0, Flux (lm). Rows show intensity values for various beam angles from 0.0 to 90.0 degrees.



Titan LED's Frosted Lenses are specially designed with a raised lens which is capable of completely hiding the 198 Diode shapes from visibility as well as custom interior optics which deliver better light levels and a wider spread,

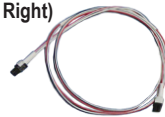


155,000 RATED HOURS

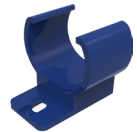
Notice: This lighting device Utilizes an External Driver!

Titan LED Tubes use a specifically engineered external LED driver to operate. Providing clean, surge protected, IC monitored constant current power is crucial to the output and longevity of the light emitting diodes.

A Titan LED wirehip is (Shown Right) required for driver connection and included with each tube.



Optional Accessory: Titan LED Mounting Clips (Shown Right)



E466370



Increased Safety

- Ideal for illuminating Retail Space, Offices, Classrooms, Garages, Warehouses, Etc. Simple and Secure Installation with industry standard Tube Based Fixtures Improved Bright White Color and Increased Light Levels Improve Safety and Visibility

Improved Maintainability

- Lowers Cost of Ownership - Pays Back Purchase Amount with Energy Savings Industry Leading Low LED Junction Temperature Heavy Gauge 6063 Aluminum Heat Sink Environmentally Friendly, No Toxic Gasses, Chemical Free, Over 95% Recyclable Typically Reduces Energy Consumption 50 - 70% Over Fluorescent Tubes Noise Free, Instant On - Off Operation, No Flickering, No Warm Up Time Utilizes Top Tier Diodes L-90 Rated at Over 155,000 Hours DOE TM-21 Quickly Go Green and Reduce Carbon Footprint Product utilizes an External Driver to supply operation power