

Model #

17F-8-38-SP-40K

Hennessy Series II Tube Light



TITAN LED LIGHTING SOLUTIONS

Hand Crafted with Pride in The United States of America

38 Watt 8 Foot Linear Tube Light

Specifications - Light Output

Total Lumen Output: 4,900 lm
Kelvin: 4000K - Frosted
CRI: 83
Lighting Angle: 130°

Specifications - Electrical

| | |
|----------------|---------------------|
| Voltage Range: | 120 - 277V |
| Dimming: | 0 - 10v Low Voltage |
| InSitu Temp: | 48.5° C |
| Voltage | 120 V |
| Frequency | 60.0 Hz |
| Current | 0.326 A |
| Power | 38.8 W |
| Drive Current | 1100 mA |
| Power Factor | .99 |
| Efficacy | 127.1 lm/W |
| THD | 10.0 % |
| Voltage | 277 V |
| Frequency | 60.0 Hz |
| Current | 0.156 A |
| Power | 39.1 W |
| Drive Current | 1100 mA |
| Power Factor | .91 |
| Efficacy | 125.7 lm/W |
| THD | 9.6 % |

Specifications - Mechanical

LED Count: 198 Mid Power
Lumileds Luxeon Top Tier LEDs
Dimensions: 93-1/2" L x 1-1/16" W x 1.2" H
Net Weight: 1.8 lbs / 0.8 kg
Ultra Durable, Vibration and Shock Resistant
Polycarbonate Frosted Lensing
No Flickering, No Noise, No Ultra Violet Emission
No Hazardous Mercury or Toxic Chemicals
Extruded USA 6063 Aluminum Heat Sink
Over 96 Percent Recyclable
Proprietary locking D/C Connector
Proprietary Non Conductive Blue ABS End Caps
ABS Single-Pin (Non Conductive for mounting only)
Replaces 90 Watt Fluorescent Tube Light

Driver SKU

#17-1CH-DR1100-ND

#17-2CH-DR1100-DIM

Additional Product SKU #'s

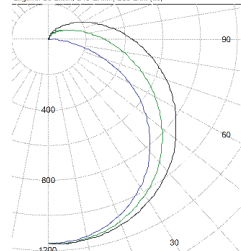
17F-8-38-SP-50K

17F-8-38-BP-50K

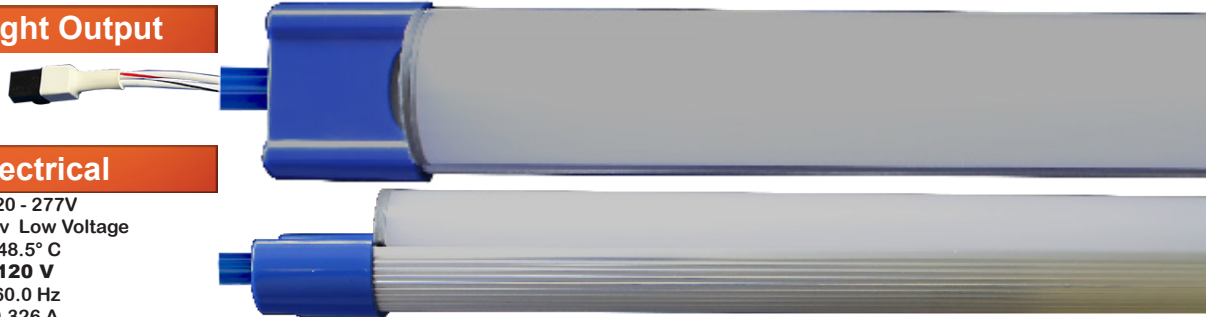
17F-8-38-BP-40K

Light Spread Information

Legend: C0-Black, C45-Green, C90-Blue (cd)



| INTENSITY SUMMARY (cd) | | | | | | |
|------------------------|------|-------|------|-------|------|-----------|
| Gamma | C0 | C22.5 | C45 | C67.5 | C90 | Flux (lm) |
| 0.0 | 1163 | 1163 | 1163 | 1163 | 1163 | 110 |
| 5.0 | 1164 | 1184 | 1182 | 1159 | 1154 | 110 |
| 10.0 | 1157 | 1156 | 1150 | 1145 | 1138 | 110 |
| 15.0 | 1142 | 1139 | 1130 | 1119 | 1110 | 319 |
| 20.0 | 1120 | 1115 | 1100 | 1083 | 1072 | 489 |
| 25.0 | 1093 | 1085 | 1063 | 1038 | 1024 | 603 |
| 30.0 | 1058 | 1047 | 1017 | 984 | 967 | 661 |
| 35.0 | 1019 | 1005 | 966 | 922 | 902 | 634 |
| 40.0 | 975 | 956 | 909 | 854 | 830 | 564 |
| 45.0 | 927 | 904 | 848 | 781 | 751 | 492 |
| 50.0 | 876 | 849 | 781 | 705 | 669 | 422 |
| 55.0 | 823 | 792 | 714 | 625 | 581 | 354 |
| 60.0 | 768 | 735 | 646 | 544 | 492 | 286 |
| 65.0 | 714 | 677 | 580 | 462 | 400 | 220 |
| 70.0 | 657 | 620 | 518 | 383 | 308 | 157 |
| 75.0 | 602 | 563 | 456 | 308 | 219 | 95 |
| 80.0 | 547 | 507 | 396 | 242 | 157 | 50 |
| 85.0 | 496 | 455 | 345 | 193 | 117 | 24 |
| 90.0 | 446 | 405 | 296 | 140 | 0 | 0 |



Titan LED's Frosted Lenses are specially designed with a raised lens which is capable of completely hiding the 198 Diode shapes from visibility and adding a wider spread all while delivering incredible light levels.



155,000 RATED HOURS

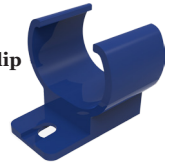
Notice: This lighting device Utilizes an External Driver!

Titan LED Tubes use a specifically engineered external LED driver to operate. Providing clean, surge protected, IC monitored constant current power is crucial to the longevity of the light emitting diodes.

Titan LED wirewhip is (Shown Right) required for driver connection and included with each tube.



Optional Accessory: Titan LED Mounting Clip (Shown Right)



Increased Safety

- Ideal for illuminating Retail Space, Offices, Classrooms, Garages, Warehouses, Etc.
- Simple and Secure Installation with industry standard Tube Based Fixtures
- Improved Bright White Color and Increased Light Levels Improve Safety and Visibility

Improved Maintainability

- Lowers Cost of Ownership - Pays Back Purchase Amount with Energy Savings
- Industry Leading Low LED Junction Temperature
- Heavy Gauge 6063 Aluminum Heat Sink
- Environmentally Friendly, No Toxic Gasses, Chemical Free, Over 95% Recyclable
- Typically Reduces Energy Consumption 50 - 70% Over Fluorescent Tubes
- Noise Free, Instant On - Off Operation, No Flickering, No Warm Up Time
- Lumileds Luxeon Top Tier Diodes
- L-90 Rated at Over 155,000 Hours DOE TM-21
- Quickly Go Green and Reduce Carbon Footprint
- Product utilizes an External Driver to supply operation power